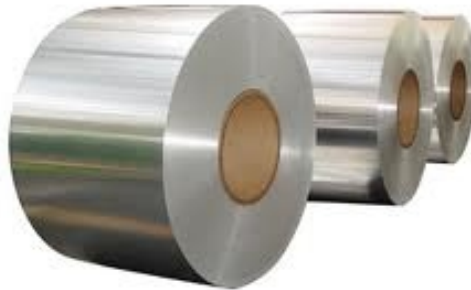
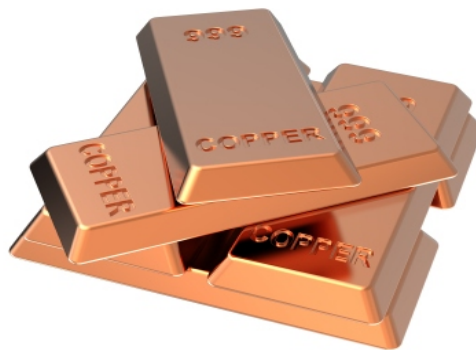


CONTENTS

Monthly Technical Levels



Varun Gupta - Research Head
varungupta@moneysukh.com
research@moneysukh.com
011-47617872 / 73



| GOLD | | |
|----------------|-------|----------|
| CONTRACT MONTH | CMP | TREND |
| OCT FUT | 38475 | SIDEWAYS |
| S1 | S2 | S3 |
| 38190 | 3770 | 37210 |
| R1 | R2 | R3 |
| 38790 | 39065 | 39405 |

| SILVER | | |
|----------------|-------|----------|
| CONTRACT MONTH | CMP | TREND |
| DEC FUT | 47475 | SIDEWAYS |
| S1 | S2 | S3 |
| 46805 | 46190 | 45305 |
| R1 | R2 | R3 |
| 48065 | 48710 | 49505 |

| CRUDE | | |
|----------------|------|----------|
| CONTRACT MONTH | CMP | TREND |
| SEPT FUT | 4096 | SIDEWAYS |
| S1 | S2 | S3 |
| 4065 | 4010 | 3955 |
| R1 | R2 | R3 |
| 4155 | 4218 | 4290 |

| COPPER | | |
|----------------|--------|----------|
| CONTRACT MONTH | CMP | TREND |
| SEPT FUT | 451.45 | SIDEWAYS |
| S1 | S2 | S3 |
| 446 | 441.9 | 435.5 |
| R1 | R2 | R3 |
| 456.9 | 462.6 | 468.1 |

| ALUMINIUM | | |
|----------------|--------|----------|
| CONTRACT MONTH | CMP | TREND |
| SEPT FUT | 139.55 | SIDEWAYS |
| S1 | S2 | S3 |
| 138.1 | 135.5 | 133.0 |
| R1 | R2 | R3 |
| 141.1 | 143.6 | 145.9 |

| LEAD | | |
|----------------|-------|----------|
| CONTRACT MONTH | CMP | TREND |
| SEPT FUT | 155.1 | SIDEWAYS |
| S1 | S2 | S3 |
| 148.9 | 144.0 | 140.2 |
| R1 | R2 | R3 |
| 156.9 | 159.0 | 162.6 |

| NICKEL | | |
|----------------|--------|----------|
| CONTRACT MONTH | CMP | TREND |
| SEPT FUT | 1249.5 | SIDEWAYS |
| S1 | S2 | S3 |
| 1238.5 | 1222.1 | 1208.6 |
| R1 | R2 | R3 |
| 1265.1 | 1279.1 | 1295.1 |

| ZINC | | |
|----------------|-------|----------|
| CONTRACT MONTH | CMP | TREND |
| SEPT FUT | 184.4 | SIDEWAYS |
| S1 | S2 | S3 |
| 181.80 | 177.1 | 173.9 |
| R1 | R2 | R3 |
| 186.9 | 193.6 | 196.0 |

| NGAS | | |
|----------------|-------|----------|
| CONTRACT MONTH | CMP | TREND |
| SEPT FUT | 179.8 | SIDEWAYS |
| S1 | S2 | S3 |
| 172.5 | 167.5 | 161 |
| R1 | R2 | R3 |
| 183.9 | 190.6 | 198.9 |

| Contracts | Price | % Chng |
|---------------|---------|--------|
| USDINR 260919 | 71.7225 | -0.17 |
| USDINR 291019 | 71.9975 | -0.16 |
| USDINR 271119 | 72.225 | -0.17 |

M MANSUKH
Investment & Trading Solutions
make more, for sure.

This report is for the personal information of the authorized recipient and does not construe to be any investment, legal or taxation advice to you. Mansukh Securities and Finance Ltd (hereinafter referred as MSFL) is not soliciting any action based on it. This report is not for public distribution and has been furnished to you solely for your information and should not be reproduced or redistributed to any person in any form.

The report is based upon information that we consider reliable, but we do not represent that it is accurate or complete. MSFL or any of its affiliates or employees shall not be in any way responsible for any loss or damage that may arise to any person from any inadvertent error in the information contained in this report. MSFL or any of its affiliates or employees do not provide, at any time, any express or implied warranty of any kind, regarding any matter pertaining to this report, including without limitation the implied warranties of merchantability, fitness for a particular purpose, and non-infringement. The recipients of this report should rely on their own investigations.

MSFL and/or its affiliates and/or employees may have interests/positions, financial or otherwise in the securities mentioned in this report. This information is subject to change without any prior notice. MSFL and/or its affiliates and/or employees nor have any conflict of interest at the time of publication of the research report neither receives any compensation from the subject company or third party in connection with the research report in the past twelve months. Also MSFL and/or its affiliates and/or employees (research analyst) has neither served as an officer, director or employee of the subject company;

MSFL reserves the right to make modifications and alterations to this statement as may be required from time to time. Nevertheless, MSFL is committed to providing independent and transparent recommendations to its clients, and would be happy to provide information in response to specific client queries.