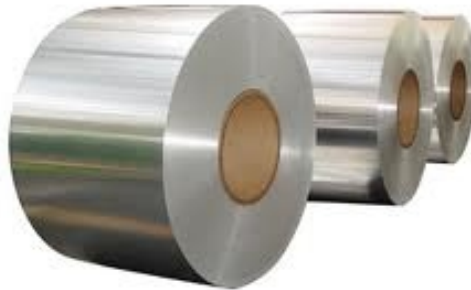
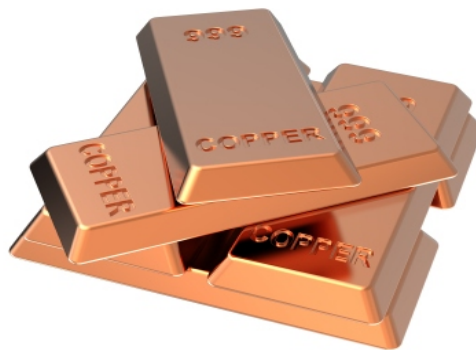


CONTENTS

✍ Monthly Technical Levels



Varun Gupta - Research Head
varungupta@moneysukh.com
research@moneysukh.com
011-47617872 / 73



GOLD		
CONTRACT MONTH	CMP	TREND
DEC FUT	50700	SIDEWAYS
S1	S2	S3
49680	49110	48550
R1	R2	R3
51605	52090	52570

SILVER		
CONTRACT MONTH	CMP	TREND
DEC FUT	60920	SIDEWAYS
S1	S2	S3
60100	59250	58155
R1	R2	R3
61665	62590	63310

CRUDE		
CONTRACT MONTH	CMP	TREND
NOV FUT	2639	SIDEWAYS
S1	S2	S3
2480	2305	2190
R1	R2	R3
2785	3010	3155

COPPER		
CONTRACT MONTH	CMP	TREND
NOV FUT	525.8	SIDEWAYS
S1	S2	S3
513	495	475
R1	R2	R3
533	543	555

ALUMINIUM		
CONTRACT MONTH	CMP	TREND
NOV FUT	152.55	SIDEWAYS
S1	S2	S3
148.6	146.8	144.1
R1	R2	R3
155.1	157.8	160.8

LEAD		
CONTRACT MONTH	CMP	TREND
NOV FUT	149.45	SIDEWAYS
S1	S2	S3
145.10	143.20	141.10
R1	R2	R3
152.80	155.10	157.90

NICKEL		
CONTRACT MONTH	CMP	TREND
NOV FUT	1143.80	SIDEWAYS
S1	S2	S3
1117.50	1090.00	1071.00
R1	R2	R3
1159.00	1175.10	1195.00

ZINC		
CONTRACT MONTH	CMP	TREND
NOV FUT	201.6	SIDEWAYS
S1	S2	S3
197.10	195.5	192.9
R1	R2	R3
203.1	205.9	208.0

NGAS		
CONTRACT MONTH	CMP	TREND
NOV FUT	248.5	SIDEWAYS
S1	S2	S3
239	232	222
R1	R2	R3
257	269	278

USDINR		
CONTRACT MONTH	CMP	TREND
NOV FUT	73.98	SIDEWAYS
S1	S2	S3
73.55	72.95	72.44
R1	R2	R3
74.29	74.65	75.05

M MANSUKH
Investment & Trading Solutions
make more, for sure.

This report is for the personal information of the authorized recipient and does not construe to be any investment, legal or taxation advice to you. Mansukh Securities and Finance Ltd (hereinafter referred as MSFL) is not soliciting any action based on it. This report is not for public distribution and has been furnished to you solely for your information and should not be reproduced or redistributed to any person in any form.

The report is based upon information that we consider reliable, but we do not represent that it is accurate or complete. MSFL or any of its affiliates or employees shall not be in any way responsible for any loss or damage that may arise to any person from any inadvertent error in the information contained in this report. MSFL or any of its affiliates or employees do not provide, at any time, any express or implied warranty of any kind, regarding any matter pertaining to this report, including without limitation the implied warranties of merchantability, fitness for a particular purpose, and non-infringement. The recipients of this report should rely on their own investigations.

MSFL and/or its affiliates and/or employees may have interests/positions, financial or otherwise in the securities mentioned in this report. This information is subject to change without any prior notice. MSFL and/or its affiliates and/or employees nor have any conflict of interest at the time of publication of the research report neither receives any compensation from the subject company or third party in connection with the research report in the past twelve months. Also MSFL and/or its affiliates and/or employees (research analyst) has neither served as an officer, director or employee of the subject company;

MSFL reserves the right to make modifications and alterations to this statement as may be required from time to time. Nevertheless, MSFL is committed to providing independent and transparent recommendations to its clients, and would be happy to provide information in response to specific client queries.